

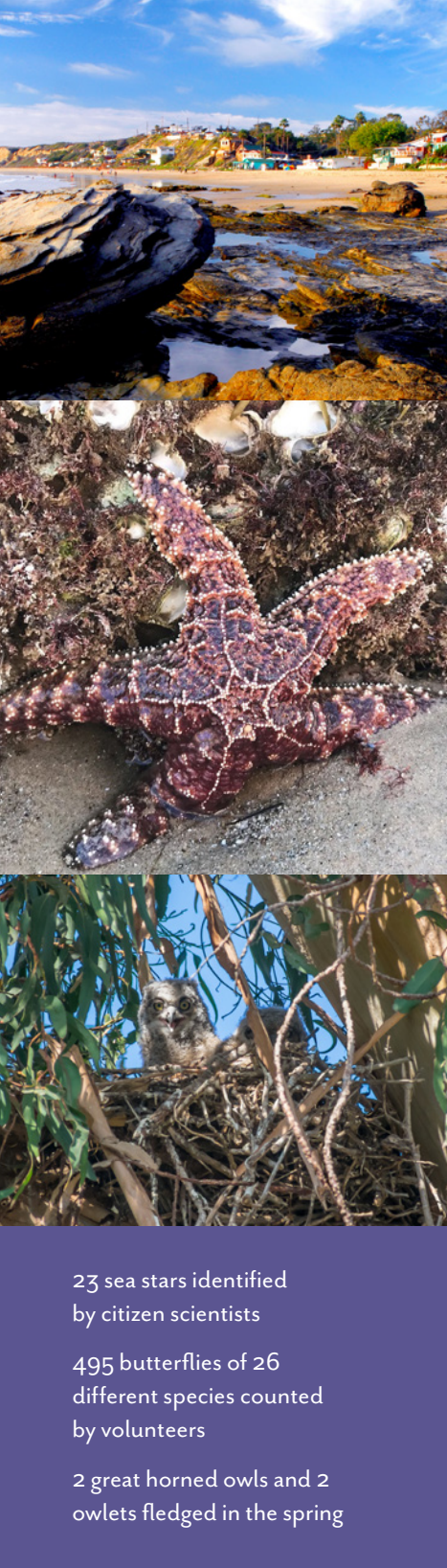


# *Crystal Cove*

CONSERVANCY

*Annual Report 2017 - 2018*





23 sea stars identified  
by citizen scientists

495 butterflies of 26  
different species counted  
by volunteers

2 great horned owls and 2  
owlets fledged in the spring

BY THE NUMBERS

1,150 ACRES IN THE CRYSTAL COVE STATE MARINE CONSERVATION AREA

2,400 PROTECTED ACRES IN CRYSTAL COVE STATE PARK'S BACKCOUNTRY

3.2 MILES OF PROTECTED COASTLINE

46 COTTAGES PLACED ON THE NATIONAL REGISTER OF HISTORIC PLACES

17 COTTAGES LEFT TO BE RESTORED

STUDENTS PARTICIPATING IN CRYSTAL COVE CONSERVANCY'S EDUCATIONAL PROGRAMS

5,300

PROPORTION OF STUDENTS FROM UNDERSERVED SCHOOLS

63%

TOTAL NUMBER OF FIELD TRIPS

116

NUMBER OF PARTICIPATING SCHOOLS

56

INCREASE IN EDUCATIONAL PROGRAMS

18%

TOTAL STUDENTS WHO HAVE PARTICIPATED SINCE 2009

20,000

\$1,799,000

INVESTMENT IN IMPROVEMENTS AND MAINTENANCE WITHIN CRYSTAL COVE STATE PARK

Front cover: The striking iridescent shell of the abalone has long held significance to the people of Crystal Cove. The Acjachemen Indians traded them and used them as a food source, and today, continue to use their shells as decoration and to burn incense during ceremonies. During the 1940s and 1950s, the Coveites living in the Historic District would collect them while diving and hold huge cookouts on the beach. After nearly becoming extinct in the 1970s, Southern California's protected abalone population is starting to slowly rebound due to conservation efforts. The resilience of our local abalone represents our hope for a sustainable future for Crystal Cove.

LETTER FROM OUR PRESIDENT & CEO

The subtle changes of the four seasons were marked at Crystal Cove State Park by the many accomplishments of 2018. Two million visitors left the hustle and bustle of everyday life behind to come to Crystal Cove State Park to absorb the majestic beauty of the coastline and vastness of the ocean's panoramic views and changing scenes.

The winter rains cast a quiet time from a visitor perspective, but the pitter patter of rain drops catalyzed life back into the plants throughout the Park. Spring's bursting blooms and flowers were accompanied by thousands of students who participated in our outdoor classroom and laboratory, either in the Michael and Tricia Berns Environmental Study Loop within Moro Canyon or out on the ocean in the Crystal Cove State Marine Conservation Area, just offshore from our 3.2 miles of pristine coastline. Summer brought visitors in droves, as some chose to participate in all the recreational activities Crystal Cove State Park has to offer, while others spent a lazy day in the sun making lifetime memories with friends and family. The fall's strong tides and waves took away the built-up sand the gentler summer waves had deposited on the beach, exposing sea glass for the most avid hunter to locate. Through the year, our Wednesday community events remained open to all, providing classes on sea glass jewelry making, environmental science activities, and tide pool tours to further the knowledge of this natural resource we are so lucky to have and cherish in our own backyard.

As the organization working in partnership with California State Parks, we are the ambassadors that re-invest your donations directly into the Park and our educational programs. Crystal Cove Conservancy ensures your dollars are put to good use as we focus on the education, preservation and conservation of this precious resource.

It's the support from all of you – our members and neighbors and friends – that has transformed Crystal Cove's sepia-toned history into something bright and vivid that matters even more today. Still Orange County's best-kept secret, Crystal Cove State Park has now become our biggest outdoor classroom, with thousands of students from dozens of schools across Southern California visiting each year. As these students step off their school bus, they step into the shoes of ecologists, environmental scientists and marine biologists. They send underwater cameras down to explore the depths of our State Marine Conservation Area, puzzle over problems in the living laboratory of our backcountry, and realize that this special place belongs to them, too.

So, whether you love the historic cottages that colorfully dot the coastline, the numerous recreational opportunities, the undeveloped shoreline, or the educational programming that inspires a new generation of leaders, Crystal Cove has it all and remains a special place on the map and in our hearts.



Sincerely,

*Alix Dunn*

Alix Dunn  
President & CEO  
Crystal Cove Conservancy and  
Crystal Cove Management Company

Current Board of Directors

- Jeffrey Cole  
Chairman
- Lori Bassman, M.D.
- Al Bennett
- Nathan Chiaverini
- Diana Lu Evans
- Mike Gottfredson
- Ralph Grippo
- Gavin Herbert
- Doug Le Bon
- Michael A. O'Connell
- Stephanie Quesada
- Teddie Ray
- Jerry Scheck
- Eric Smyth
- Richard Swinney

Crystal Cove Conservancy Executive Staff

- Alix Dunn  
President & CEO
- Laura Davick  
Founder & Vice President
- Dan Gee  
President, Crystal Cove Beach Cottages

Crystal Cove Conservancy Team Members

- Timothy Arehart
- Sharlene Baker
- David Barba
- Chris Beiro
- Richard Boufford
- Erin Broughton
- Khai Dang
- Jordan Diemert
- Holly Fletcher
- Luma Fowler
- Deena Harros
- Kajsa James
- Sara Ludovise
- Kaitlin Magliano
- Kian Maleki
- William Mercado
- Marisol Morales
- Laura Morgan
- Cindy Otto
- Shelbi Richardson
- Judi Simon
- Erick Valdez
- Chelsea Webb

State Park Representative

Eric Dymmel  
Central Sector Superintendent,  
Orange Coast District,  
California State Parks



# Our Mission...

As the nonprofit partner of Crystal Cove State Park, Crystal Cove Conservancy is committed to supporting important preservation, education and conservation initiatives that will cultivate our future environmental leaders and ensure that Crystal Cove, and all places like it, live on for generations.

## Preservation

Crystal Cove State Park is one of Orange County’s most iconic destinations, giving visitors a glimpse into the past of simpler times along California’s coast. Crystal Cove Beach Cottages remain an extremely coveted destination due to their nature as a low-cost, affordable accommodation. This year, over 21,000 visitors were able to enjoy sun, salt air and family by staying overnight in one of the 24 charming historic cottages.



Photo: J. Christopher Launi

The Conservancy’s Heritage Legacy Project for California represents the final phase needed to complete our vision for Crystal Cove State Park, resulting in the restoration of the remaining 17 historic cottages along the Historic District’s North Beach. When remaining funds are raised and the project is completed, it will double overnight occupancy at the park, resulting in an additional 22,000 nights available to the public. This project will provide funding for a sustainable future for Crystal Cove State Park and Crystal Cove’s Historic District.

## Conservation

This past year, Crystal Cove Conservancy partnered with UC Irvine, State Park natural resource managers, committed volunteers, and thousands of local students to support conservation and restoration efforts in Crystal Cove State Park. One of our most important and unique partners were the 600 fifth grade students who took part in Project CRYSTAL, which immersed them in investigating how best to protect Crystal Cove State Park’s Moro Canyon. Participating students helped to restore an acre of land near the Michael & Tricia Berns Environmental Study Loop, while collecting data and analyzing which restoration strategies are the most effective. Findings from student-collected data have helped us develop new knowledge about restoration that can be applied throughout our park and other open spaces.

Crystal Cove Conservancy also supported Crystal Cove State Park’s conservation efforts through several wildlife monitoring projects. This year, butterfly monitoring volunteers spent over 120 hours hiking along transects in Moro Canyon as they identified and counted native butterflies, an important indicator of ecosystem health. Students from Orange Coast College also partnered with The Conservancy to bring a county-wide owl limpet monitoring program to Crystal Cove State Park’s tidepools. By tracking how populations of different species are changing over time, we can help understand how Crystal Cove State Park’s ecosystems may be impacted by future environmental changes.



## Education

Over 2,400 high school and junior high school students ventured aboard fishing vessels this past school year to explore and study Crystal Cove’s State Marine Conservation Area. Many had the opportunity to witness the blow of a gray whale or enjoy common dolphin frolic alongside the boat. They were all able to take part in scientific monitoring by testing the ocean’s water quality, using underwater cameras to study local fish species, and collecting and identifying plankton samples under a microscope. For some of those students, this field trip had a lasting impact. One student told us in a post-program survey that “having this cool experience inspired me to want to go into environmental science.” He was not alone. One third of the students who participated in our post-program assessments indicated that the Marine Protected Area Science Cruise program had impacted their future career choice or made them more interested in considering a career in science.

Because of supporters like you, 63% of our students came from Title 1 and underserved schools in Santa Ana, Anaheim, Costa Mesa, Placentia, and other local cities. Teachers commonly tell us that without the scholarship support we provide, they would be unable to bring their students to participate in these life-changing programs.



### Our Impact on Learners

PERCENTAGE OF HIGH SCHOOL STUDENTS WHO SAID THE PROGRAM INFLUENCED THEIR CAREER OR COLLEGE CHOICES	32.5%
PERCENTAGE OF HIGH SCHOOL STUDENTS WHO THOUGHT THAT SCIENCE WAS INTERESTING AFTER PARTICIPATING	95%
PERCENTAGE OF HIGH SCHOOL STUDENTS WHO SAID THIS WAS THEIR FIRST TIME TO TAKE PART IN REAL SCIENCE	75%

## Art in the Park

Preserving the spirit of the past is an important part of Crystal Cove Conservancy’s mission. Along with the charming overnight cottage rentals, The Conservancy is committed to keeping Crystal Cove State Park’s rich history of plein air art alive. Artists, including those from the famous colony in Laguna Beach, were among the very first visitors to Crystal Cove in the early twentieth century. Early impressionist painters helped to document the landscape for the joy and education of future generations.

This year, The Conservancy carried on Crystal Cove’s artistic traditions by hosting plein air painting classes for a record-breaking 180 participants and partnering with Crystal Cove State Park to host our second annual Art in the Park spring event. Forty local artists also participated in two art shows put on by The Conservancy’s Park Interpretive Store & Gallery, raising over \$14,000 to support our mission. Through this work, new generations are discovering the importance of capturing the beauty of Crystal Cove onto canvas.

## Accessibility

Our state parks belong to all Californians. Crystal Cove Conservancy is committed to ensuring that everyone, even non-traditional park visitors, have access to the beauty and charm of Crystal Cove. In 2018, we helped to bring low-vision senior groups to Crystal Cove’s Historic District, exploring the area’s charm through touch, sound and feel. We also continued our commitment to make the Park accessible to low-income and underserved youth, partnering with State Park staff and the Santa Ana Police Athletic and Activity League to bring 100 at-risk youth from Santa Ana to spend a week at the beach during Camp Cove.





Consolidated Statement of Financial Position  
June 30, 2018

ASSETS	
ASSETS	
Cash and cash equivalents	\$961,895
Investments in U.S. treasury bills	5,802,957
Accounts and pledges receivable	195,123
Inventory	41,908
Prepaid expenses	2,332,150
Property and equipment, net	51,318
Endowment investments	633,040
TOTAL ASSETS	\$10,018,391
LIABILITIES AND NET ASSETS	
LIABILITIES	
Accounts payable and accrued expenses	542,576
Deferred revenue	880,198
Total liabilities	1,422,774
COMMITMENTS AND CONTINGENCIES	
NET ASSETS	
Unrestricted	
Board-designated for restoration activities	52,462
Board-designated endowment	65,824
Undesignated	2,556,336
Total unrestricted	2,674,622
Temporarily restricted	5,920,995
Total net assets	8,595,617
TOTAL LIABILITIES AND NET ASSETS	\$10,018,391

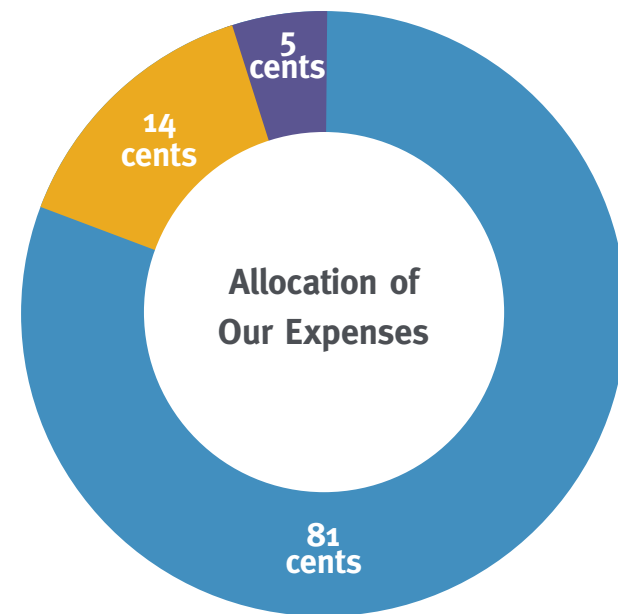
Statement of Activities  
For the year ending June 30, 2018

	Unrestricted	Temporarily Restricted	Total
Revenue and support:			
Pledges and contributions	\$326,553	\$200,297	\$526,850
Special events	332,398	328,179	660,577
Memberships	107,532	-	107,532
Interpretive store revenue, net of cost of goods sold of \$244,013	288,091	-	288,091
Cottage rental income	1,307,462	-	1,307,462
Concessionaire income	1,474,310	-	1,474,310
Investment income, net	60,872	31,463	92,335
Other income	-	-	-
In-kind contributed services	272,745	-	272,745
Net assets released from restriction	1,546,425	(1,546,425)	-
Total revenue and support	5,716,388	(986,486)	4,729,902
Expenses:			
Program			
Concessionaire activities	1,897,707	-	1,897,707
Interpretive activities	695,152	-	695,152
Restoration activities	1,116,604	-	1,116,604
Cottage operations	1,105,599	-	1,105,599
Total program expenses	4,815,062	-	4,815,062
Administrative	295,946	-	295,946
Fundraising expenses	808,541	-	808,541
Total expenses	5,919,549	-	5,919,549
Change in net assets	(203,161)	(986,486)	(1,189,647)
Net assets, beginning of year	2,877,783	6,907,481	9,785,264
Net assets, end of year	\$2,674,622	\$5,920,995	\$8,595,617
TOTAL LIABILITIES AND NET ASSETS		\$10,018,391	

Footnote: The decrease in net assets for the year was due to spending down dollars raised in previous years to prepare for restoration of the North Beach Cottages.



At Crystal Cove Conservancy we are committed to using funds responsibly.



What this means is for every dollar spent:

81 cents goes to Educational and Interpretive Programming

14 cents goes to Fundraising

5 cents goes to Management and General Expenses

The national benchmark is 75% for Programming.

We are putting your hard earned dollars to good use!

- Educational & Interpretive Programming
- Fundraising
- Management & General Expenses

In January of this year we launched a capital campaign to restore the final 17 cottages on the North Beach. This Heritage Legacy Project for California is the final phase that completes our long-awaited vision of a preserved Crystal Cove State Park and creates a sustainable future for the Park. On October 1, 2018 we reached an important milestone in the campaign achieving a halfway point - \$19M – in donations and pledges.

As a result, we will be embarking on a two-year infrastructure and site preparation construction project of the North Beach. In the coming two years we will continue our fundraising initiatives to complete the goal to raise another \$19M for the historic preservation of the 17 cottages.

As founding supporters of the Heritage Legacy Project for California we are pleased to acknowledge gifts over \$25,000 from the following:

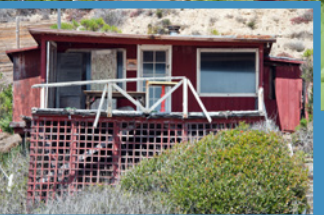
North Beach Pledges & Donations Through 10/1/18

Anonymous  
California Coastal Commission  
Eva and Doug Le Bon  
WWW Foundation - In honor of M.H. Whittier  
City of Newport Beach  
Teddie Ray and Michael Ray Family  
Bonnie Gregory, BMJ Gregory Charitable Foundation  
Laura Davick  
Lori and Harley Bassman  
Jeffrey and Paula Cole  
Stella Hiatt  
Anonymous  
Gavin and Kerry Herbert  
James J. Moloney and Erin C. Walsh-Moloney  
Mike and Linda Mussallem

Pacific Life Foundation  
Steen Family  
Shelley B. Thunen  
Glenn Bozarth  
Richard and Jody Swinney  
Christine L. Carr - In honor of Larry B. Porter  
Pierre and Judy d'Albert  
Pat and Bonnie Fuscoe  
Dan and Rosalie Gee  
Patty and Greg Penske Family  
Sheets, Paquette & Wu Dental Practice  
Ann and Eric Smyth  
Jennifer Steele and Jay Bauer - In memory of Vivian Vance Taft  
Laura Tarbox

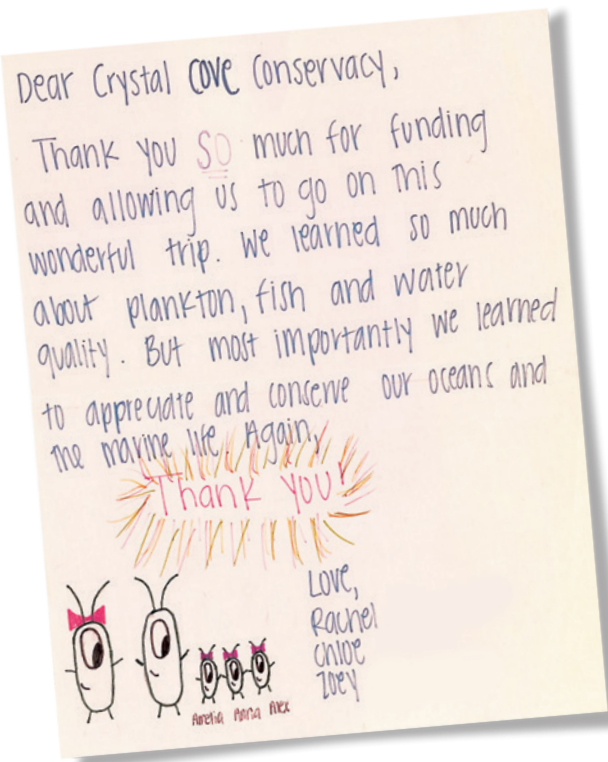
Planned/Estate Giving

Laura Davick  
Doug Grossman  
Carol Fallon  
Judith d'Albert  
Eric Steen



Artist Renderings by Kevin Davidson





# THANK YOU TO OUR DONORS

July 1, 2017 - June 30, 2018

Annette and Bucky Oltmans  
Pacific Life Foundation  
Patty and Greg Penske Family  
PBS SoCal  
Ann and Eric Smyth  
Southern California Edison  
Richard and Jody Swinney  
Laura Tarbox  
Shelley Thunen  
Wells Fargo Foundation  
Wohl Family Fund  
Ellen Wragge  
Young's Market Company

## Annual Giving

**\$10,000 to \$24,999**

Lori and Harley Bassman  
Capital Group/Capital Group Co.  
Charitable Foundation  
Charles Schwab  
City of Newport Beach  
Paula and Jeff Cole  
Contrarian Group, Inc.  
Croul Family Foundation  
Crystal Cove Beach Cottages  
Elite Island Resorts  
Farmers & Merchants  
Firebrand Media LLC  
Karol and Mike Gottfredson  
Bonnie Gregory  
California State Parks Foundation  
Paula and Jeff Cole  
COAST MAGAZINE  
Crystal Cove Beach Cottages  
Cygnet Foundation  
Firebrand Media  
Stella Hiatt  
Marriott's Newport Coast Villas  
Mara and Keith Murray  
REI  
Resources Legacy Fund Foundation  
Joan Irvine Smith  
Tourbillon and OMEGA (US)  
Ueberroth Family Foundation  
Dr. Tammy Wong,  
Fostering Executive Leadership  
Nancy and Arn Youngman

## \$50,000 - \$99,000

Annenberg Foundation  
Anonymous  
Arnold and Mabel Beckman  
Foundation  
California State Parks Foundation  
Paula and Jeff Cole  
COAST MAGAZINE  
Crystal Cove Beach Cottages  
Cygnet Foundation  
Firebrand Media  
Stella Hiatt  
Marriott's Newport Coast Villas  
Mara and Keith Murray  
REI  
Resources Legacy Fund Foundation  
Joan Irvine Smith  
Tourbillon and OMEGA (US)  
Ueberroth Family Foundation  
Dr. Tammy Wong,  
Fostering Executive Leadership  
Nancy and Arn Youngman

## \$25,000 - \$49,000

Wylie and Bette Aitken  
Allergan Foundation  
William and Angela Ashmore  
Jay Bauer and Jennifer Steele  
Al Bennett and Rudi Berkelhamer  
Rick and Diana Boufford  
Glenn Bozarth  
Christine Carr  
Comerica Private Banking  
Cox Cares  
Croul Family Foundation  
Diana Lu and Gareth Evans  
First Foundation Bank  
Fuscoe Engineering  
Rosalie and Dan Gee  
Karol and Michael Gottfredson  
Bonnie Gregory  
Bert Gross  
Jackson Lewis P.C.  
Barbara and Greg MacGillivray  
McKenna Auto Group  
Gregg Miller  
Neiman Marcus  
Sonia and Victor Nichols

Christine Pappas and Hugh Bradley  
Michael Ray  
Teddie Ray  
Schlinger Family Foundation  
Juliet and Mark Scholz  
Sandra and Barry Silverman  
Ann and Eric Smyth,  
CIP Real Estate  
Southern California Edison  
Rick and Alexandra Taketa  
Laura Tarbox  
Shelley B. Thunen  
Wells Fargo Foundation  
Wheeler Foundation  
Ellen Wragge  
Michelle and Claude Yacoel

## \$1,000 - \$4,999

Jill Adams  
Michael Alten  
Kirsten Anderson  
Barbara and David Beek  
Dr. James Caillouette and  
Gabrielle White  
Philip Capriccio  
Tim and Rosalind Casey  
Sabrina Covington  
Wendy and Kevin Cox  
Carol and Torin Cunningham  
Cygnet Foundation  
Kevin Davidson  
Michelle and Tim Dean  
Lucy Donahue and Lily Jebavy  
Elisabeth Elfend and Daniel Penn  
Diana and Gareth Evans  
Sherry and Warren Fix  
Kay Flierl  
Patti and Paul Gallagher  
Grand Wailea – A Waldorf  
Astoria Resort  
Betty and Bob Grant  
Doug Grossman  
Chet and Amy Harrison  
John Hermann  
Jay Herron  
Crisi and Paul Hosea  
Libby and Jim Huyck  
Stephen Jenvey  
Elizabeth and Don Johnson  
Jody and Craig Johnson  
Katy and Dean Kitchens  
KRISTALLE  
Laguna Plein Air Painters Assoc.  
Patricia Langner  
Julie Laughton  
Marcia and Hank Lawson  
Karen and David Legrew  
Petrina Long  
Katie and James Loss  
Barbara and Wendell Maberry  
Mammoth Mountain Ski Area  
Beth and Robert Marusi  
Keith Matassa  
McKenna Auto Group  
Susanne and Jim Moore  
Alison Moore Cotter  
Kristine Nishiyama  
Michael Obermeyer  
Ocho Partners  
Cindy and John Olivier  
Mark and Tawnie Olson  
Annette and Bucky Oltmans  
Jenny and Hon. Will O'Neill  
Natasha and Todd Palmaer

## \$5,000 to \$9,999

Wylie and Bette Aitken  
Allergan Foundation  
Al Bennett and Rudi Berkelhamer  
Rick and Diana Boufford  
Canyon Ranch  
Christine Carr  
Uyen and Ray Chu  
Vicki Clark  
Jose A. Collazo  
Confidence Foundation  
Mark and Mary Doyle  
Expedia Group Lodging  
Partner Services  
Barbara Ferguson  
Maria Filippov  
Fuscoe Engineering, Inc.  
Rosalie and Dan Gee  
Angela and Ed Grasso  
Malia and Ralph Grippio  
Carl Hill  
Jackson Lewis P.C.  
Joan Irvine Smith  
& Athalie R. Clarke Foundation  
Cheryl and Mark Law  
Susie and Bob McIntosh  
Gail and Joseph Moscoso  
Pacific Life Foundation

Mark Porterfield  
Shirley and Steven Quackenbush  
Merrill Lynch  
Joni Ravenna and Mitchell Sussman  
Janet and James "Walkie" Ray  
Randy Higbee Gallery  
Marisa and Stephen Robbins  
Leslie and Doug Robidoux  
Rosanna and Andy Rocker  
Deborah and Frank Rugani  
David Salisbury, Newport Landing  
Carolyn Sams  
Michael Sandeen  
Wendy and Brett Sanders  
Christine and Gerald Scheck  
Bill Schenker and  
Talya Nevo-Hacohen  
Jeff Sewell  
Teresa and Cameron Simbro  
Brian Smith  
SOKA University  
Paula and William Steele  
Jim Tanner  
Lisa Taylor  
Karen and Jeff Teasley  
Tesla Motors Fashion Island  
The PIMCO Foundation  
The Ranch at Laguna Beach  
Kristin and David Titov  
Treadway, Lumsdaine & Doyle, LLP  
Kathleen Treseder and  
Jim Randerson  
Michelle and Kerwin Walters  
Windes Audit/Tax Advisory  
Wohl Family Fund  
Jim Woodark  
Edna and Felix Yan  
Caroline Zimmerman

## \$500-\$999

Joanne Apotheloz  
Aris Boutique  
Diane and Jim Bailey  
Paige and Bill Baker  
Balboa Bay Resort  
Joli Beal  
Bellagio Spa & Salon  
Richard Berg  
Allison and Rob Blackwell  
Jennifer Bolanis-Rogers  
Carla Bosch  
Candice and Marc Buchan  
Janet and Stewart Burris  
Janice Caballero  
Cindy Carillo  
Val Carson  
Chris Alan Music  
Christine Coleman  
Cynthia Conlon  
John Connell  
Katie Costello  
Bobbi Cox  
Sally and Randy Crockett  
Leslie Daff and Randy Gardner  
Renee Degner  
Carol and Dell DeRevere  
Disneyland Resort Corporate  
Citizenship  
Alix and Ernie Dunn  
Gary Edwards  
Fetneh Blake  
Indrani Gill and  
Harry Mirchandaney  
Sarah and Jim Griffin

Mabel and Roger Gross  
Alison Hahn  
Cindy and Rob Hambleton  
Dr. Barbara Hamkalo  
Lucy and Mike Harrison  
Nina and Thomas Hauge  
Pam Howard  
Julia and Brian Hunt  
Huntington State Beach  
Junior Lifeguard Association  
Sue and Paul Jarosz  
Lynne and Dennis Jilot  
Steve Kell  
Sonia and Gary Kessler  
Beth Kiley  
Marshall and Carol Lee  
Margo and Steven Legler  
Jill and Stan Littlely  
Lorin Backe Photography  
Melissa Maher  
Susan and Dick Mason  
Yong and Randall McCardle  
Lili and Jock McGraw  
Liz and Andy McGurk  
Terry Meehan  
Jana and Michael Miller  
Cherilyn and Mark Moehlman  
Barbara and Steve Morihiro  
Lisa Mozzini-McDill  
Pamela Newcomb  
Tricia Nichols  
Beverly and Bruce Nickerson  
Gail and Peter Ochs  
Sharon and George Orff  
Brian and Susan O'Toole  
Cindy Otto and Kevin Shepherd  
Frances Pampeyan  
Pamela Panattoni  
Paul F. Gero Photography  
Patrick Petersen  
Wayne and Karen Pinnell  
Col. Eric N. Piper  
Planet Beauty  
Stephanie Quesada and  
Vince Jackson  
Janet and Steve Rappaport  
Tina and Ross Richardson  
Katherine and Stephen Ricossa  
Diane Shammass  
Dedra and George Sines  
Kenneth Solomon  
South Coast Plaza  
Joseph Stoddard  
Jeff Stubbart  
Marilyn and Tom Sutton  
Chris Swanson  
Patricia Trimarco  
Sheryl and Chris Van Ruiten  
Larry Vince  
Rebecca and Jack Vlok  
Alba and Andrew Washabaugh  
Jackie Wiseman  
Rick Wlodyga  
Janet Yee and Eric Vartio  
Peter Zeughauser and Qing Ye  
Trevor Zinn

[crystalcove.org](http://crystalcove.org)





**Crystal Cove Conservancy**

#5 Crystal Cove Newport Coast, CA 92657

Nonprofit Org  
US Postage  
**PAID**  
Santa Ana CA  
Permit No. 4554

Return Service Requested

# Crystal Cove

CONSERVANCY



## ON THE HORIZON

Seventeen cottages sit within the Historic District's North Beach awaiting restoration. Crystal Cove Conservancy turned to the community and raised \$19M to start the infrastructure renovations. \$19M is still needed to complete the historic restoration of these beloved gems, completing the vision of a sustainable Crystal Cove State Park, full public access, twice the affordable overnight stays and educational programs just steps from the ocean.

**Get In Touch**

T 949.376.6200 x201  
info@crystalcove.org  
crystalcove.org

